



Manicaland HIV/STD Prevention Project Epidemic Status Report 2023

Biomedical Research & Training Institute, Number 10 Seagrave Rd, Avondale, Harare, Zimbabwe Tel: 04735000/02
& Stand 18, Mutasa D.C., P.O. Box Hauna 3449, Zimbabwe, Tel: 0228 2230.

-For

SAKUBVA AND ALL SURROUNDING AREAS

INTRODUCTION

Round 7 was carried out from July 2018 to October 2019, round 8 was carried out from February 2021 to July 2021 (i.e. during the worst of the Covid-19 pandemic), and round 9 was carried out from July 2022 to December 2022 (i.e. as Covid-19 became less severe due to vaccinations and emergence of less deadly variants of the virus). This report compares the main results on local patterns of HIV infection, sexually transmitted diseases (STDs), knowledge and awareness of HIV, and sexual and health-seeking behaviour between the 3 rounds. In rounds 8 and 9, extra questions were added about the Covid 19 virus. For these two rounds, HIV prevalence estimates are based on self-reports for new survey participants and for those who were uninfected in the last round in which they participated.

AREAS COVERED

The survey covered the following areas New Chisamba, Mundembe, Old Dangare and Muchena. In rounds 7, 8 and 9 of the survey, the numbers of adults who participated were 796, 880 and 1,176 respectively. These numbers fluctuated due to changes in migration and changes in survey eligibility criteria.

KEY RESULTS

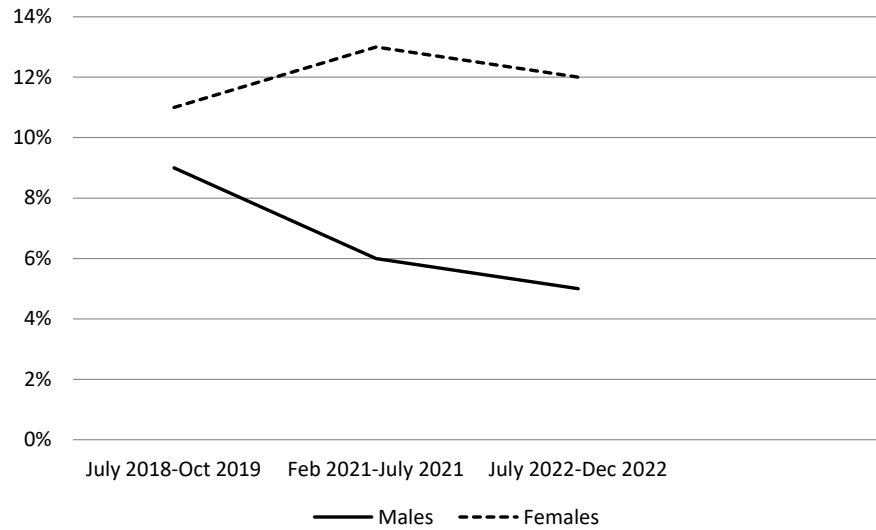
- 5% men and 12% women were infected with HIV in round 9 (July-December 2022)
- In all three rounds of the survey, HIV prevalence has been higher in men and women who report having had larger numbers of sexual partners in their lifetime
- Big increases were found between round 8 ('during Covid-19') and round 9 ('as Covid-19 eased') in the proportions of women but remained constant for men who reported having had a Covid-19 test, having tested and received a positive result, and having been vaccinated against Covid-19
- Whilst more women in round 9 than in round 8 said they had *ever* been in contact with someone who had Covid-19, fewer said they were at risk of getting infected themselves in the future in round 9 (as Covid-19 eased) than in round 8 (during Covid-19): 35% vs. 54%
- The proportion of young women (aged 15-19yrs) who reported having started sex fell from 32% in round 7 ('before Covid-19') to 23% in round 8 ('during Covid-19'); but increased again to 35% in round 9 ('as Covid-19 eased')
- Amongst women with a recent non-regular partner, the proportion reporting unprotected sex with this partner increased from 33% in round 7 ('before Covid-19') to 86% in round 8 ('during Covid-19') then fell to 38% in round 9 ('as Covid-19 eased'); the proportion of these women reporting using pre-exposure prophylaxis (PrEP) increased from 8% in round 7 ('before Covid-19') to 14% in round 8 ('during Covid-19') and 53% in round 9 ('as Covid-19 eased')
- Fewer men had more than one sexual partner in the last month in round 8 (5.3% 'during Covid-19') than in round 7 (7.7% 'before Covid-19'). The proportion fell slightly at 4% in round 9 ('as Covid-19 eased')
- The proportion of men reporting STD symptoms in the last 12 months increased from 10% in round 7 ('before Covid-19') to 1% in round 8 ('during Covid-19') and round 9 ('as Covid-19 eased')
- HIV testing in the last 6 months in men fell from 42% before Covid-19 to 33% during Covid-19 and 18% as Covid-19 eased. For women, recent HIV testing fell from 46% to 34% before recovering to 43%
- The proportions of people living with HIV who reported being on ART fell between round 8 ('during Covid-19') and round 9 ('as Covid-19 eased') – men: 100% to 80%; women: 100% to 97%

Site 14 Ages 15+

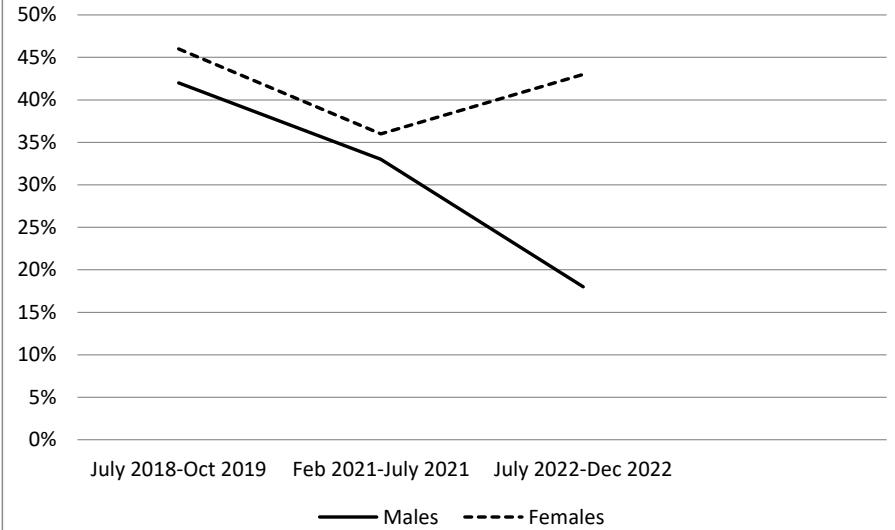
	MALES									FEMALES												
	Round 7 July 2018-Oct 2019			Round 8 Feb 2021-July 2021			Round 9 July 2022-Dec 2022			Round 7 July 2018-Oct 2019			Round 8 Feb 2021-July 2021			Round 9 July 2022-Dec 2022						
	HIV+ people	Total	%	HIV+ people	Total	%	HIV+ people	Total	%	HIV+ people	Total	%	HIV+ people	Total	%	HIV+ people	Total	%				
1. HIV PREVALENCE																						
1.1 All Participants	26	292	9%	22	394	6%	▼	22	460	5%	▼	48	451	11%	61	481	13%	▲	68	562	12.1%	▼
1.2 Age Group																						
15-19	4	91	4%	1	88	1%	▼	1	48	2%	▲	5	140	4%	1	72	1%	▼	0	43	0%	▼
20-24	0	62	0%	0	58	0%	—	1	59	2%	▲	3	108	3%	5	80	6%	▲	5	97	5%	▼
25-34	4	46	9%	4	105	4%	▼	1	133	1%	▼	14	80	18%	8	115	7%	▼	11	153	7%	▲
35-44	7	28	25%	10	61	16%	▼	6	100	6%	▼	13	62	21%	19	92	21%	▼	19	110	17%	▼
45-54	7	27	26%	4	46	9%	▼	9	72	13%	▲	14	34	41%	19	71	27%	▼	16	84	19%	▼
55+	2	15	13%	3	36	8%	▼	4	48	8%	—	3	44	7%	9	51	18%	▲	17	75	23%	▲
1.4 Marital Status																						
Single	5	160	3%	2	180	1%	▼	3	143	2%	▲	7	129	5%	7	107	7%	▲	1	79	1%	▼
Married	19	119	16%	19	188	10%	▼	17	291	6%	▼	22	258	9%	27	253	11%	▲	30	303	10%	▼
Divorced/separated/widowed	3	15	20%	1	26	4%	▼	2	26	8%	▲	24	103	23%	27	121	22%	▼	37	180	21%	▼
In non-polygynous union	18	114	16%	21	362	6%	▼	17	288	6%	▲	22	256	9%	33	355	9%	▲	30	303	10%	▲
In polygynous union	1	5	20%	0	6	0%	▼	0	3	0%	—	0	0	0%	1	5	20%	▲	0	0	0%	▼
1.5 Education																						
None/primary	2	15	13%	3	76	4%	▼	2	22	9%	▲	14	73	19%	21	156	13%	▼	21	84	25%	▲
Secondary/higher	21	256	8%	19	318	6%	▼	20	438	5%	▼	33	376	9%	39	321	12%	▲	47	478	10%	▼
1.6 Employment Status																						
Formal employment	2	25	8%	7	108	6%	▼	16	267	6%	▼	2	22	9%	10	74	14%	▲	11	69	16%	▲
Informal employment	7	48	15%	5	56	9%	▼	6	122	5%	▼	13	63	16%	13	68	19%	▲	19	111	17%	▼
Unemployed	7	77	9%	10	164	6%	▼	1	42	2%	▼	30	267	11%	36	285	13%	▲	38	350	11%	▼
Student	4	98	4%	0	66	0%	▼	0	55	0%	—	5	96	5%	2	54	4%	▼	0	55	0%	▼
1.7 Number of Sexual Partners in life																						
1	0	40	0%	4	69	6%	▲	5	117	4%	▼	12	212	6%	16	227	7%	▲	16	276	6%	▼
2-4	5	69	7%	7	110	6%	▼	7	137	5%	▼	34	133	26%	31	138	22%	▼	40	200	20%	▼
5+	16	80	20%	10	101	10%	▼	8	125	6%	▼	4	23	17%	10	35	29%	▲	12	49	24%	▼
2. QUESTIONS & ANSWERS ON KNOWLEDGE, RISK PERCEPTION & STIGMA																						
2.2 Knowledge - Factors Thought to Increase Risk																						
15+ years old																						
Said Yes	Total Asked	%	Said Yes	Total Asked	%	Said Yes	Total Asked	%	Said Yes	Total Asked	%	Said Yes	Total Asked	%	Said Yes	Total Asked	%	Said Yes	Total Asked	%		
241	318	76%	358	395	91%	▲	491	559	88%	▼	430	478	90%	387	485	80%	▼	597	617	97%	▲	
32	318	10%	53	395	13%	▲	138	559	25%	▼	19	478	4%	55	485	11%	▲	31	617	5%	▼	
10	318	3%	16	395	4%	▲	33	617	5%	▲	10	478	2%	27	485	6%	▲	13	617	2%	▼	
2.3 Knowledge - Infant Infection																						
15+ years old																						
244	318	77%	268	395	68%	▼	507	559	91%	▲	431	478	90%	359	485	74%	▼	515	617	83%	▲	
40	318	13%	114	395	29%	▲	127	559	23%	▼	44	478	9%	51	485	11%	▲	25	617	4%	▼	
2.4 Knowledge - HIV versus AIDS																						
15+ years old																						
60	318	19%	84	395	21%	▲	106	559	19%	▼	62	478	13%	67	485	14%	▲	27	617	4%	▼	
2.5 Stigma (Kusemwa)																						
15+ years old																						
301	318	95%	380	395	96%	▲	452	559	81%	▼	454	478	95%	472	485	97%	▲	605	617	98%	▲	
107	318	34%	144	272	53%	▲	189	301	63%	▲	174	478	36%	221	397	56%	▲	204	464	44%	▼	
3. SEXUAL BEHAVIOUR, STD SYMPTOMS & TREATMENT SERVICES																						
3.1 Sexual Behaviour*																						
15+ years old																						
17	221	7.7%	15	282	5.3%	▼	17	417	4%	▼	5	383	1.3%	8	413	1.9%	▲	12	547	2.2%	▲	
81	163	50%	85	251	34%	▼	175	377	46%	▼	73	271	27%	81	266	30%	▲	48	412	12%	▼	
17	97	18%	5	88	6%	▼	7	99	7%	▲	46	146	32%	17	73	23%	▼	25	72	35%	▲	
77	110	70%	52	87	60%	▼	170	185	92%	▲	25	75	33%	72	84	86%	▲	8	21	38%	▼	
78	191	41%	80	197	41%	▼	167	331	50%	▲	121	309	39%	110	284	39%	▼	140	396	35%	▼	
3.2 STD Symptoms - Last 12 Months																						
15+ years old																						
31	299	10%	4	359	1%	▼	5	507	1%	▼	49	497	10%	31	434	7%	▼	30	531	6%	▼	
2	318	1%	3	359	1%	▲	1	507	0%	▼	26	478	5%	13	434	3%	▼	20	531	4%	▲	
4. UPTAKE OF HIV SERVICES																						
4.1 HIV Testing																						
15+ years old																						
201	318	63%	316	395	80%	▲	460	559	82%	▲	385	478	81%	404	483	84%	▲	562	617	91%	▲	
143	318	45%	247	394	63%	▲	353	559	63%	▲	333	477	70%	333	485	69%	▼	430	617	70%	▲	
87	206	42%	102	309	33%	▼	83	460	18%	▼	181	560	46%	136	397	34%	▼	240	562	43%	▲	
135	206	66%	181	309	59%	▼	187	460	41%	▼	295	390	76%	230	397	58%	▼	348	562	62%	▲	
4.2 ARV Treatment																						
15+ years old																						
12	17	71%	18	18	100%	▲	20	25	80%	▼	34	38	89%	52	52	100%	▲	67	69	97%	▼	
4.3 HIV prevention method																						
15+ years old																						
71	299	24%	101	395	26%	▲	122	559	20%	▼	308	478	64%	371	485	76%	▲	578	617	94%	▲	
249	318	78%	346	395	88%	▲	499	599	89%	▲	2	25	8%	10	72	14%	▲	25	47	53%	▲	
0	77	0%	0	52	0%	—	4	170	2%	▲												
5. CORONA VIRUS																						
15+ years old																						
72	363	20%	237	559	42%	▲																
18	395	5%	68	559	12%	▲																
38	395	10%	419	559	75%	▲																
87	395	22%	125	559	22%	▲																
0	87	0%	4	125	3%	▲																
▲ Marks an increase from previous round] ▼ Marks a decrease from previous round] — Marks no change between rounds																						
* Respondents who reported not having started sex yet were excluded here. ** Respondents with no non-regular partners were excluded																						
*** Denominator consist of respondents who ever had sex with recent non-regular partner																						

SAKUBVA GRAPHS

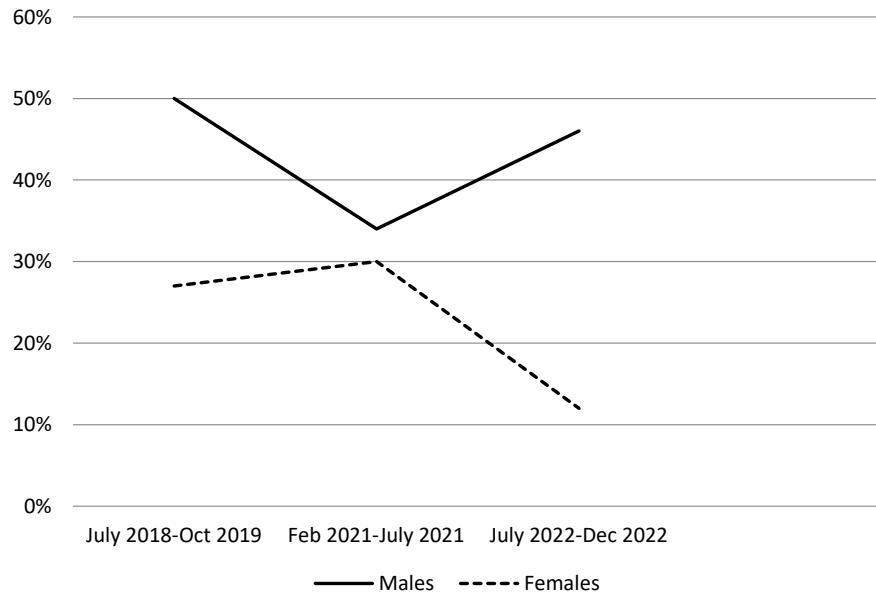
HIV Prevalence



Tested for HIV in the last 6 months



One or more new partners in the last year



Patterns in Covid 19

