



Manicaland Centre for Public Health Research Epidemic Status Report 2014

Biomedical Research & Training Institute, 10 Seagrave Rd, Avondale, P.O. Box CY 1753, Harare, Zimbabwe
Tel: 04 333091/335641 & Prof S.K Chandiwana Public Health Research Centre, Mutasa D.C., P.O. Box 3449, Hauna.
for

NYAZURA AND SURROUNDING AREAS

INTRODUCTION

The baseline survey (round 1) for the Manicaland HIV/STD Prevention Project was carried out from July 1998 to January 2000. Follow-up surveys were conducted from July 2001 to January 2003 (round 2), August 2003 to August 2005 (round 3), August 2006 to November 2008 (round 4), July 2009 to July 2011 (round 5) and finally Round 6 from July 2012 to November 2013 (round 6). This sheet compares the main results on local patterns of HIV infection, experience of other sexually transmitted diseases (STDs), knowledge and awareness of HIV and other STDs, and sexual and health seeking behaviour including HIV testing and treatment in rounds 4, 5 and 6. For rounds 5 and 6, results are also shown for children aged 2-17 years. The following is a brief summary of the main findings; further details are given overleaf.

AREAS COVERED

The survey in this area covered the following areas Excessior Farm, Netherlands Farm, Fodya Farm, Folkington Farm, West Valley Farm, Willows Farm, Nyazura 1-161, St Stephens, Mahere, Niro, Cortleigh Farm, Delpport Farm, Progress Farm, Village 14, Nyazura ZRP, Mavhudzi, Nyazura 162-883, Nyazura and Nyazura Flats. In the fourth, fifth and sixth round surveys 913, 1,107 and 956 adults participated, respectively. In the fifth and Sixth round 236 and 169 children participated respectively. The numbers of adults fluctuated between rounds due to migration, changes in survey eligibility criteria and other factors.

KEY RESULTS

- 16% of men and 23.2% of women are currently infected with HIV.
- 4.8% of boys and 3.5% of girls aged 2-14 years are currently infected with HIV.
- HIV prevalence for men and women has declined steadily over the past 8 years. Furthermore the prevalence is levelling off at a high level.
- The number of adults who reported one or more new partner(s) in the last year has declined steadily among both men women in the past 5 years.
- Stigma associated with HIV/AIDS is decreasing and most people are willing to look after a relative who has AIDS. More people are willing to disclose their status although, the proportion of people that discloses to spouse/partner is higher than those that disclose to their parents.
- The proportion of adults having an HIV test has increased substantially over the last 8 years. However, 42% of the men and 20% of women have never had an HIV test.
- There was a significant increase in the uptake of ART for men (14% to 43%) and women (25% to 53%) in the past 7 years. However 57% of HIV+ men are not on ART
- Only 15% of boys and 17% of girls aged between 2 to 14 were found to have been tested for HIV in their lifetime.

1. HIV PREVALENCE	MALES									FEMALES								
	ROUND 4 (2006-2008)			ROUND 5 (2009-2011)			ROUND 6 (2012-2013)			ROUND 4 (2006-2008)			ROUND 5 (2009-2011)			ROUND 6 (2012-2013)		
	HIV+ people	Total	%	HIV+ people	Total	%	HIV+ people	Total	%	HIV+ people	Total	%	HIV+ people	Total	%	HIV+ people	Total	%
1.1 All Participants (15-54 years old)	77	418	18.4%	85	472	18.0%	67	418	16.0%	140	495	28.3%	146	635	23.0%	125	538	23.2%
1.2 Age Group																		
15-19	4	97	4.1%	5	114	4.4%	5	102	4.9%	3	99	3.0%	8	133	6.0%	4	88	4.5%
20-24	7	96	7.3%	7	75	9.3%	2	54	3.7%	24	107	22.4%	13	111	11.7%	15	91	16.5%
25-34	32	134	23.9%	35	157	22.3%	16	135	11.9%	68	154	44.2%	68	192	35.4%	45	190	23.7%
35-44	23	51	45.1%	20	77	26.0%	24	78	30.8%	28	69	40.6%	33	108	30.6%	36	94	38.3%
45-54	11	40	27.5%	18	49	36.7%	20	50	40.0%	17	66	25.8%	24	91	26.4%	25	75	33.3%
1.3 Marital Status																		
Single	16	201	8%	9	186	5%	6	143	4%	13	113	12%	8	126	6%	3	68	4%
Married	48	188	26%	64	263	24%	49	240	20%	78	291	27%	85	400	21%	72	367	20%
Divorced/separated/widowed	12	27	44%	12	23	52%	12	35	34%	43	80	54%	53	109	49%	50	102	49%
In non-polygamous union	47	183	26%	61	256	24%	46	233	20%	32	105	30%	81	384	21%	70	358	20%
In polygamous union	1	3	33%	3	7	43%	3	6	50%	3	12	25%	3	15	-	2	10	20%
1.4 Education																		
None/primary	16	84	19%	23	96	24%	21	107	20%	63	179	35%	48	197	24%	45	153	29%
Secondary/higher	54	321	17%	57	366	16%	43	318	14%	68	292	23%	87	411	21%	74	374	20%
1.5 Employment Status																		
Formal employment	16	74	22%	19	93	20%	12	38	32%	15	40	38%	24	63	38%	6	25	24%
Subsistence agriculture	6	19	32%	14	60	23%	19	133	14%	21	53	40%	16	50	32%	20	55	36%
Unemployed	51	266	19%	48	242	20%	35	198	18%	101	353	29%	102	444	23%	98	421	23%
Student	3	54	5.6%	4	77	5%	1	49	2%	3	48	6.3%	4	78	5%	1	37	2.7%
1.6 Male Circumcision																		
Circumcised	3	8	38%	1	5	20%	1	27	4%	4	94	4%	7	117	6%	2	6	33%
Not circumcised	73	406	18%	81	461	18%	65	387	17%	54	228	24%	47	314	15%	41	277	15%
1.7 Number of Sexual Partners in life																		
0	4	101	4%	13	179	7%	0	0	#DIV/0!##	61	128	48%	83	177	47%	46	118	39%
1	9	65	14%	6	43	14%	6	49	12%	18	32	56%	9	22	41%	15	28	54%
2-4	27	126	21%	33	128	26%	19	134	14%									
5+	36	120	30%	33	122	27%	30	112	27%									
2. KNOWLEDGE, RISK PERCEPTION & STIGMA																		
2.1 Knowledge - Modes of Transmission*																		
Ritual scarification (Kutenwa nyora)	224	399	56%	332	471	70%	344	411	84%	356	472	75%	514	633	81%	283	550	51%
Mosquito bites	67	395	17%	107	472	23%	127	411	31%	133	440	30%	162	635	26%	114	548	21%
Sharing utensils	68	393	17%	67	469	14%	50	411	12%	72	457	16%	59	629	9%	28	549	5%
2.2 Knowledge - Factors Thought to Increase Risk*																		
Presence of STDs	249	375	66%	319	471	68%	303	411	74%	429	465	92%	553	635	87%	450	550	82%
Condoms	53	394	13%	47	471	10%	32	411	8%	78	462	17%	46	635	7%	95	549	17%
Witchcraft	10	396	3%	37	470	8%	42	411	10%	29	466	6%	32	634	5%	25	549	5%
2.3 Knowledge - Infant Infection																		
Infants can be infected via breastfeeding	346	393	88%	394	472	83%	344	411	84%	399	460	87%	560	635	88%	456	550	83%
All children of HIV+ women infected	131	417	31%	124	472	26%	92	410	22%	142	495	29%	135	635	21%	76	550	14%
2.4 Knowledge - HIV versus AIDS																		
HIV+ person can always be identified visually	142	418	34%	144	472	31%	97	411	24%	192	494	39%	156	632	25%	115	559	21%
2.5 Stigma (Kusemwa)																		
Willing to care for an infected relative	369	418	88%	403	471	86%	397	411	97%	466	495	94%	560	634	88%	536	550	97%
Cared for a relative with AIDS §	99	417	24%	108	471	23%	135	291	46%	193	491	39%	223	635	35%	202	239	85%
If infected, think neighbours would help	253	414	61%	325	469	69%	206	257	80%	278	494	56%	427	635	67%	293	384	76%
Disclosure of HIV +ve status to spouse/regular partner	2	5	40%	23	29	79%	26	38	68%	8	22	36%	46	82	56%	53	88	60%
Disclosure of HIV +ve status to mother/father	1	5	20%	13	29	45%	12	38	32%	2	22	9%	31	82	38%	38	88	43%
Disclosure of HIV +ve status to employer	0	5	0%	1	29	3%	0	38	0%	0	22	0%	0	82	0%	1	88	1%

3. SEXUAL RISK BEHAVIOUR & STD SYMPTOMS

3.1 Sexual Behaviour			
More than one partner in last month**			
17	317	5%	
One or more new partner(s) in the last year.			
90	321	28%	
Consistent condom use with all casual partners for >=3 years			
49	202	24%	
Can negotiate for safer sexual relations with spouse			
167	268	62%	

Said Yes	Asked	%	Said Yes	Asked	%	Said Yes	Asked	%
20	332	6%	▲	24	305	8%	▲	
73	214	34%	▲	85	305	28%	▼	
49	200	25%	▲	40	207	19%	▼	
193	295	65%	▲	161	292	55%	▼	

Said Yes	Asked	%	Said Yes	Asked	%	Said Yes	Asked	%
3	401	1%	▼	2	525	0%	▼	
80	406	20%	▼	47	374	13%	▼	
9	109	8%	▼	2	77	3%	-	
271	351	77%	▲	382	443	86%	▲	
52	415	13%	▼	31	531	6%	▼	
26	410	6%	-	15	531	3%	-	
44	58	76%	▼	23	38	61%	▼	

4. UPTAKE OF HIV SERVICES

4.1 HIV Testing			
Know where to get an HIV test			
122	415	29%	▲
Tested for HIV			
32	417	8%	▲
Collected results			
31	32	97%	▲
Tested for HIV in the last 2 years			
23	415	6%	▲

4.2 ARV Treatment			
Heard of drugs for HIV/AIDS			
64	414	15%	▲
Think these drugs work			
30	70	43%	▲
Know that drugs are available in the area			
0	77	0%	▲
Receiving ART of those HIV+			
12	85	14%	▲

4.3 PMTCT (Prevention of Mother-To-Child Transmission)			
Mother tested for HIV (last pregnancy in last three years)			
342	471	73%	▲
Mother HIV +ve (self-reported)			
131	472	28%	▲
HIV+ mothers who received sdNVP for PMTCT			
122	131	93%	▼
sdNVP treatment for infant			
236	242	98%	▲
MER treatment for infant			
122	242	50%	▲
ART treatment for infant			
251	412	61%	▲
10	12	83%	▲
166	427	39%	▲
29	67	43%	▲

4.4 Male Circumcision			
Males who are circumcised			
8	414	2%	▼
5	466	1%	▼
27	425	6%	▲

Said Yes	Asked	%	Said Yes	Asked	%	Said Yes	Asked	%
376	415	91%	▲	241	414	58%	▲	
236	242	98%	▲	166	427	39%	▲	
10	12	83%	▲	29	67	43%	▲	

Said Yes	Asked	%	Said Yes	Asked	%	Said Yes	Asked	%
263	495	53%	▲	551	635	87%	▲	
133	493	27%	▲	371	635	58%	▲	
112	133	84%	▲	361	371	97%	▲	
103	495	21%	▲	313	635	49%	▲	
108	494	22%	▲	358	634	56%	▲	
67	111	60%	▲	286	364	79%	▲	
201	296	68%	▲	261	293	89%	▲	
36	146	25%	▲	66	125	53%	▲	
63	153	41%	▲	179	228	79%	▲	
14	63	22%	▼	24	179	13%	▼	
4	50	8%	▲	16	55	29%	▲	
5	14	36%	▲	10	24	42%	▲	
1	24	4%	-	3	13	23%	▲	
0	24	0%	-	1	13	8%	▲	

5. CHILD HEALTH & HEALTHCARE

5.1 HIV prevalence			
2-14			
	3	113	2.7%
Age Group			
2-4			
	2	24	8.3%
5-9			
	0	34	0.0%
10-14			
	1	55	1.8%

5.2 HIV Testing & Treatment (children 2-14 years)			
Ever tested for HIV in life			
	2	113	2%
HIV+ children among those tested for HIV			
	0	2	0%
HIV+ children on ART			
	0	3	0%

5.3 Male Circumcision (children 2-14 years)			
Males who are circumcised			
	0	111	0%

5.4 Orphanhood (children 2-17 years)			
Paternal orphan			
	64	180	36%
Maternal orphan			
	23	180	13%
Double orphan			
	17	180	9%

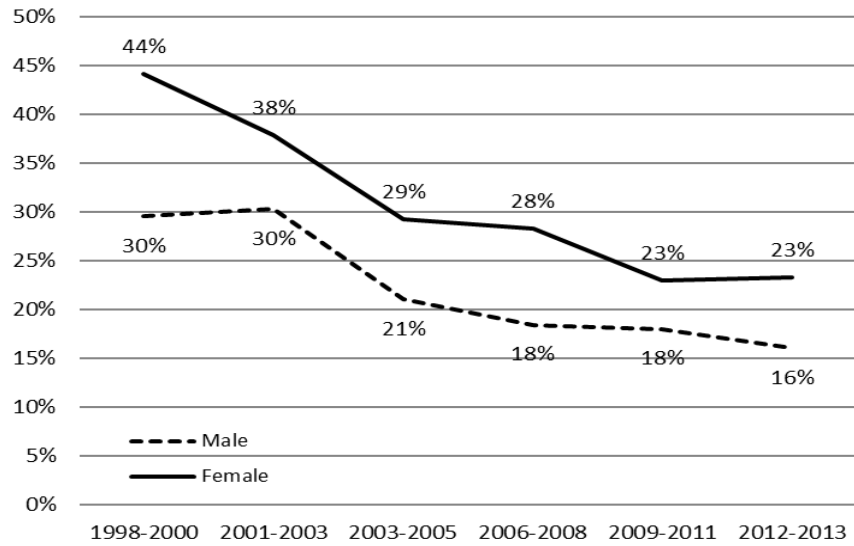
5.5 Sexual Abuse (children 7-14 years)			
Ever experienced sexual abuse			
	0	75	0%

Said Yes	Asked	%	Said Yes	Asked	%	Said Yes	Asked	%
4	84	4.8%	▲	0	22	0.0%	▼	
3	36	8.3%	▲	3	36	8.3%	▲	
1	26	3.8%	▲	1	26	3.8%	▲	
13	84	15%	▲	1	13	8%	▲	
0	4	0%	—	0	4	0%	—	
4	84	5%	▲	16	82	20%	▼	
5	82	6%	▼	5	82	6%	▼	
5	82	6%	▼	5	82	6%	▼	
0	62	0%	—	0	62	0%	—	

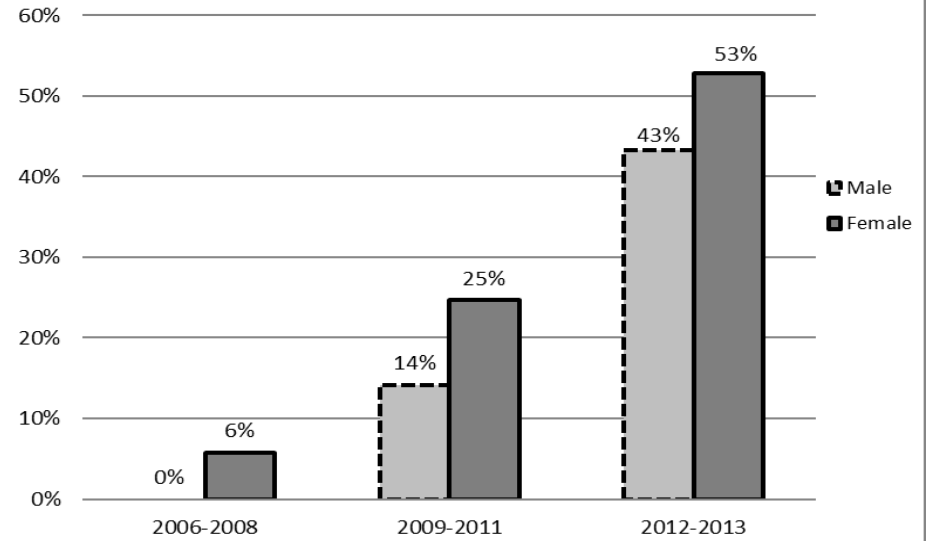
Said Yes	Asked	%	Said Yes	Asked	%	Said Yes	Asked	%
4	123	3.3%	▲	3	85	3.5%	▲	
0	18	0.0%	▲	1	24	4.2%	▲	
3	49	6.1%	▼	2	34	5.9%	▼	
1	56	1.8%	▼	0	27	0.0%	▼	
2	124	2%	▲	15	86	17%	▲	
1	2	50%	▼	2	15	13%	▼	
0	4	-	▼	2	3	67%	▼	
55	193	28%	▼	17	82	21%	▼	
35	193	18%	▼	8	82	10%	▼	
25	193	13%	▼	6	82	7%	▼	
0	77	0%	▲	2	64	3%	▲	

▲:Marks an increase from previous round| ▼:Marks a decrease from previous round| —:Marks no change between rounds
 * Includes responses after probing. **Respondents who reported not having started sex yet were excluded here. ***Includes local and other hospitals and clinics
 § Includes respondents who report not knowing anybody with AIDS

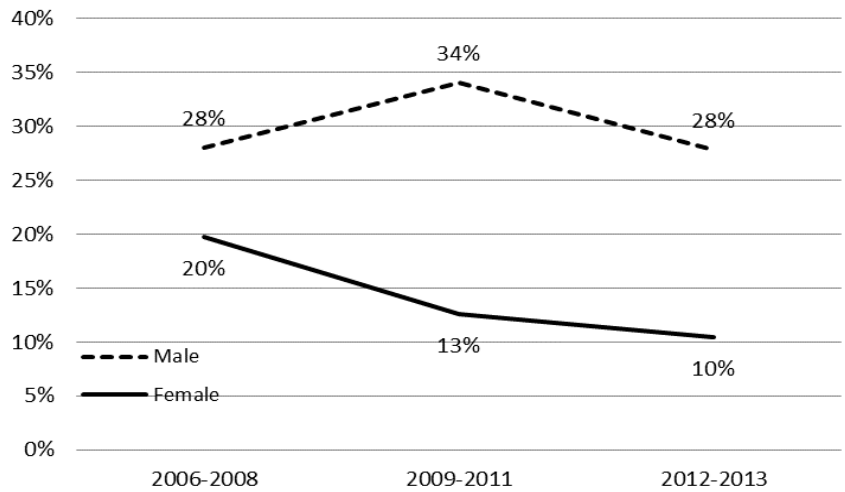
HIV prevalence for all adult participants



ART uptake amongst all HIV+ adults



One or more new partner(s) in the last year



Ever had an HIV test

